



INDOFINE Chemical Company, Inc.

121 Stryker Lane, Bldg. 30, Suite 1 • Hillsborough, NJ 08844 • U.S.A.

Phone: (908) 359-6778 • FAX: (908) 359-1179

website: www.indofinechemical.com

e-mail: chemical@indofinechemical.com

CERTIFICATE OF ANALYSIS

Catalog Number: 06-1538

Product Name: MICHELIOLIDE

CAS Number: [68370-47-8]

Lot Number: 2003415

Chemical Formula: C₁₅H₂₀O₃

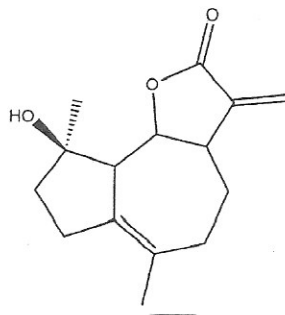
Molecular Weight: 248.32

Appearance: Off-white powder

Loss on Drying: 1.8%

Storage: Store at 2-8°C. Protect from light.

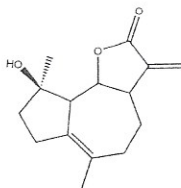
Purity(HPLC): 99.81%



Prepared by:
Ramesh Mandadi
Ramesh Mandadi
Director of Operations

Reviewed and Approved by:
Sujata Moton
Sujata Moton
VP

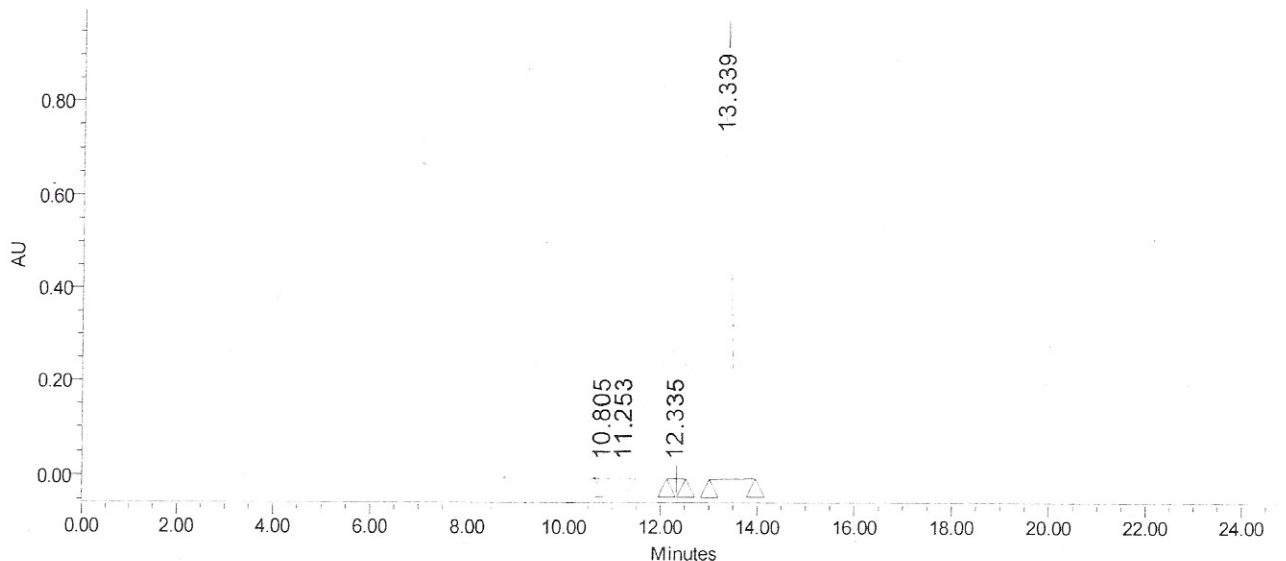
HPLC ANALYSIS



Catalog No.: 06-1538
 Product Name: Micheliolide
 Lot No.: 2003415

SAMPLE INFORMATION			
Sample Name:	Micheliolide	Acquired By:	prf01
Sample Type:	Unknown	Sample Set Name	
Vial:	97	Acq. Method Set:	Micheliolide
Injection #:	1	Processing Method	Samples
Injection Volume:	10.00 ul	Channel Name:	PDA Ch1 215nm@4.8nm
Run Time:	25.0 Minutes	Proc. Chnl. Descr.:	PDA Ch1 215nm@4.8nm

Auto-Scaled Chromatogram



Peak Results

Name	RT	Area	% Area	Height (µV)	USP Plate Count	USP Resolution
1	10.805	7436	0.07	798	30672.04	
2	11.253	9465	0.09	1002	31095.44	1.76
3	12.335	3991	0.04	403	32492.16	4.21
4	13.339	10995451	99.81	954259	31083.15	3.53

Prepared by
Ramesh Mandadi
 Ramesh Mandadi
 Director of Operations

Reviewed and Approved by
Sujata Moton
 Sujata Moton
 VP